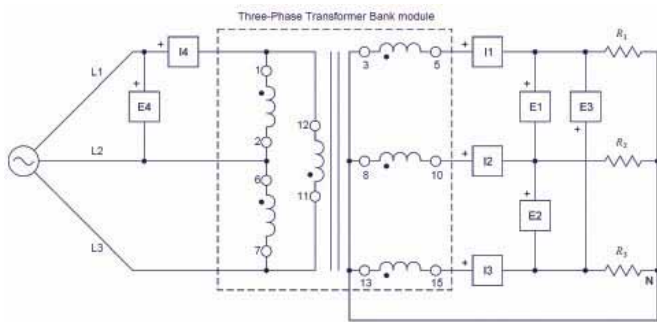


Three-Phase Transformer Banks

Course 86379

The Three-Phase Transformer Banks course covers the operating characteristics of three-phase transformer banks. The course also explores the winding connection (wye and delta configurations) and shows how to ensure proper phase relationships between the phase windings.



Topic Coverage:

- » Explore the operation of three-phase transformer banks.
- » Discover how to connect the windings of three-phase transformer banks in wye, delta, wye-wye, delta-delta, wye-delta, or delta-wye configuration.
- » Examine the voltage, current, and phase relationships between the primary windings and the secondary windings for each of these configurations.
- » Become familiar with the different uses of three-phase transformer banks in three-phase ac power circuits.

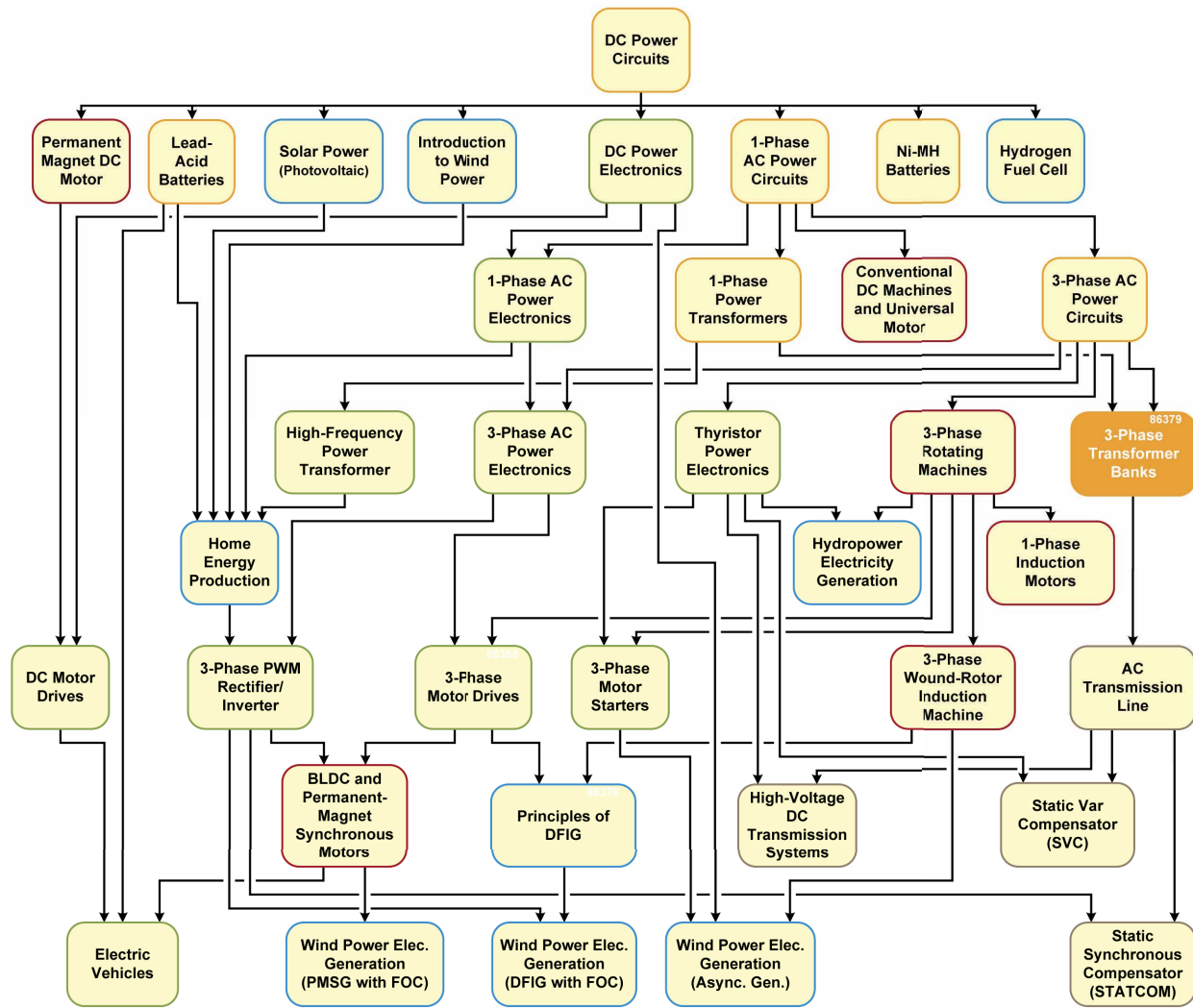
Features and Benefits:

- » All transformer windings are protected against overcurrents by electronic fuses that reset automatically.
- » Low-cost training solution.



Lab-Volt®

Lab-Volt Electric Power Technology Training Program



Equipment

Qty	Model	Description	Qty	Model	Description
1	8131	Three-Module Workstation	1	9063-B	Data Acquisition and Control Interface
1	8311	Resistive Load	1	30004-2	24 V AC Power Supply
1	8348-4	Three-Phase Transformer Bank	1	86379/-1	Student Manual/Instructor Guide
1	8823	Three-Phase Power Supply			
1	8951-L	Connection Leads			

Lab-Volt reserves the right to make product improvements at any time and without notice. **Note:** A computer is required to perform the exercises.

