

Antenna Positioner, RCS Ready 581822 (9506-A0)

FESTO

LabVolt Series

Datasheet



* The product images shown in this document are for illustration purposes; actual products may vary. Please refer to the Specifications section of each product/item for all details. Festo Didactic reserves the right to change product images and specifications at any time without notice.

Festo Didactic
en
11/2024

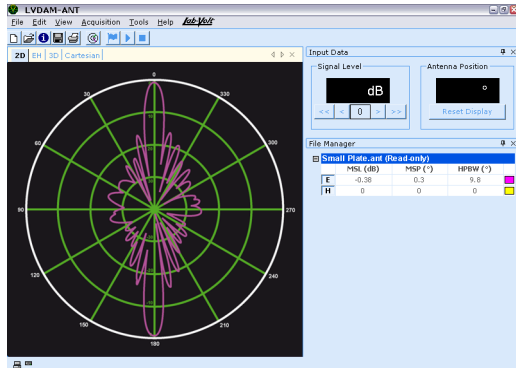
Table of Contents

General Description _____	3
Additional Equipment Required to Perform the Exercises (Purchased separately) _____	3
Specifications _____	3
Module Options Description _____	4

General Description

This variant of the Antenna Positioner is provided with an auxiliary RF input coupled to an RF signal detector. These additional components are required when the ATMS is used with the optional RCS Demonstration Accessories, Model 9594-B, to measure and observe the near-field or far-field relative Radar Cross Section (RCS) of reflecting objects (targets). RCS patterns of targets with different shapes are acquired, displayed, and stored using the LVDAM-ANT software the same way as antenna radiation patterns are. The ATMS and RCS Demonstration Accessories allow quasi-monostatic and bi-static RCS measurements to be performed.

The standard Antenna Positioner, Model 9506, is no longer required when the Antenna Positioner, Model 9506-A, is ordered.



A switch on the front panel of the Antenna Positioner allows selection between the RF input mounted on the base of the rotating mast and the auxiliary RF input.

RCS pattern of a small metal plate obtained using the ATMS.

Additional Equipment Required to Perform the Exercises (Purchased separately)

Qty	Description	Model number
1	RCS Demonstration Accessories _____	581913 (9594-B0) ¹

Specifications

Parameter	Value
Unregulated DC Power Requirement	+25 V – 90 mA, -25 V – 90 mA, +11 V – 90 mA
Drive Motor Power Input	24 V – 1.25 A – AC
RF Detector	
Frequency Range	1-15 GHz
Input Impedance	50 Ω
Maximum Input Power	100 mW, CW
Signal Amplifier Input	
Impedance	10 kΩ
Center Frequency	1 kHz
Signal Output	
Voltage Range	0 to +10 V
Impedance	600 Ω
Physical Characteristics	
Dimensions (H x W x D)	260 x 385 x 250 mm (10.2 x 15.2 x 9.8 in)
Net Weight	10.2 kg (22.4 lb)

¹ The RCS demonstration accessories are required in order to perform RCS measurements.

Module Options Description

RCS Demonstration Accessories 581913 (9594-B0)



The RCS Demonstration Accessories kit contains all the accessories required to measure the relative RCS pattern of targets using the ATMS. It includes targets of various shapes (small and large metal plates, cylinder, and prism-shaped target), a 2 m SMA cable, a fixed antenna support, and an antenna mounting pole.

Reflecting the commitment of Festo Didactic to high quality standards in product, design, development, production, installation, and service, our manufacturing and distribution facility has received the ISO 9001 certification.

Festo Didactic reserves the right to make product improvements at any time and without notice and is not responsible for typographical errors. Festo Didactic recognizes all product names used herein as trademarks or registered trademarks of their respective holders. © Festo Didactic Inc. 2024. All rights reserved.

Festo Didactic SE

Rechbergstrasse 3
73770 Denkendorf
Germany

P. +49(0)711/3467-0
F. +49(0)711/347-54-88500

Festo Didactic Inc.

607 Industrial Way West
Eatontown, NJ 07724
United States

P. +1-732-938-2000
F. +1-732-774-8573

Festo Didactic Ltée/Ltd

675 rue du Carbone
Québec QC G2N 2K7
Canada

P. +1-418-849-1000
F. +1-418-849-1666

www.labvolt.com

www.festo-didactic.com