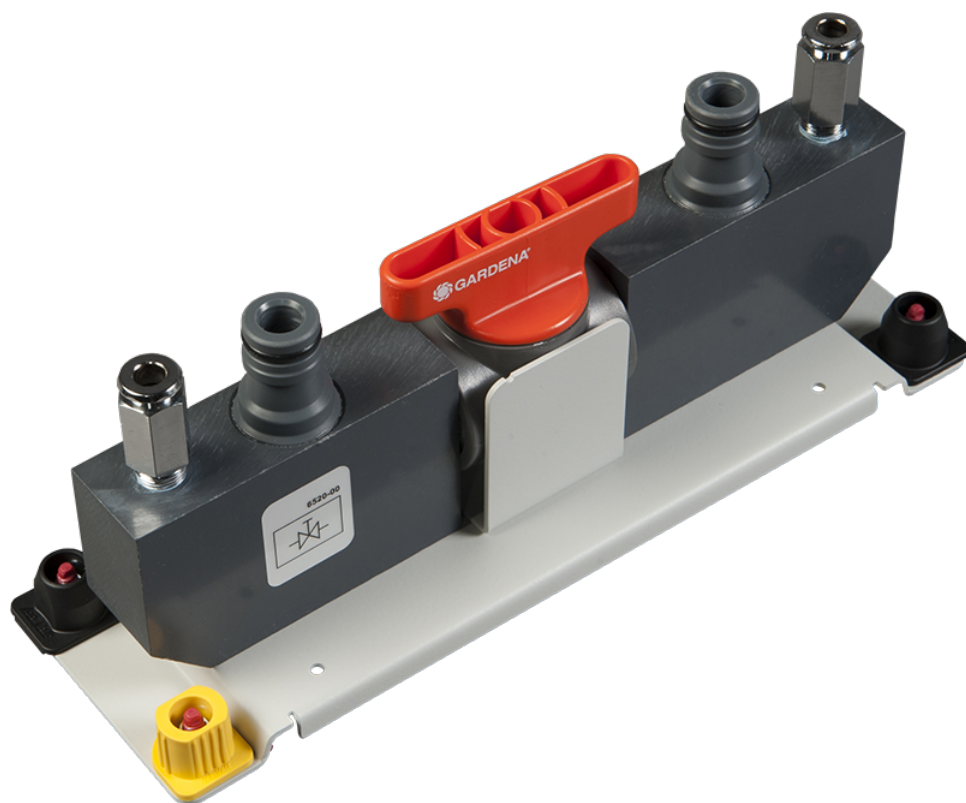


Hand-Operated Two-Way Valve 582368 (6520-00)

FESTO

LabVolt Series

Datasheet



* The product images shown in this document are for illustration purposes; actual products may vary. Please refer to the Specifications section of each product/item for all details. Festo Didactic reserves the right to change product images and specifications at any time without notice.

Festo Didactic
en
11/2024

Table of Contents

General Description _____ 3

Specifications _____ 3

General Description

The Hand-Operated Two-Way Valve controls fluid flow in an on or off fashion and also helps when necessary to ensure that a system component is safely isolated from other parts of the system.

Specifications

Parameter	Value
Valve	
Type	Hand-operated, two-way, ball
Inlet and Outlet Diameter	1.3 cm (0.5 in)
Pressure Taps	Two, one at the inlet and one at the outlet, with quick-connect ball check sockets.
Physical Characteristics	
Dimensions (H x W x D)	22 x 7 x 9.5 cm (8.7 x 2.75 x 3.75 in)
Net Weight	0.59 kg (1.3 lb)

Reflecting the commitment of Festo Didactic to high quality standards in product, design, development, production, installation, and service, our manufacturing and distribution facility has received the ISO 9001 certification.

Festo Didactic reserves the right to make product improvements at any time and without notice and is not responsible for typographical errors. Festo Didactic recognizes all product names used herein as trademarks or registered trademarks of their respective holders. © Festo Didactic Inc. 2024. All rights reserved.

Festo Didactic SE

Rechbergstrasse 3
73770 Denkendorf
Germany

P. +49(0)711/3467-0
F. +49(0)711/347-54-88500

Festo Didactic Inc.

607 Industrial Way West
Eatontown, NJ 07724
United States

P. +1-732-938-2000
F. +1-732-774-8573

Festo Didactic Ltée/Ltd

675 rue du Carbone
Québec QC G2N 2K7
Canada

P. +1-418-849-1000
F. +1-418-849-1666

www.labvolt.com

www.festo-didactic.com