

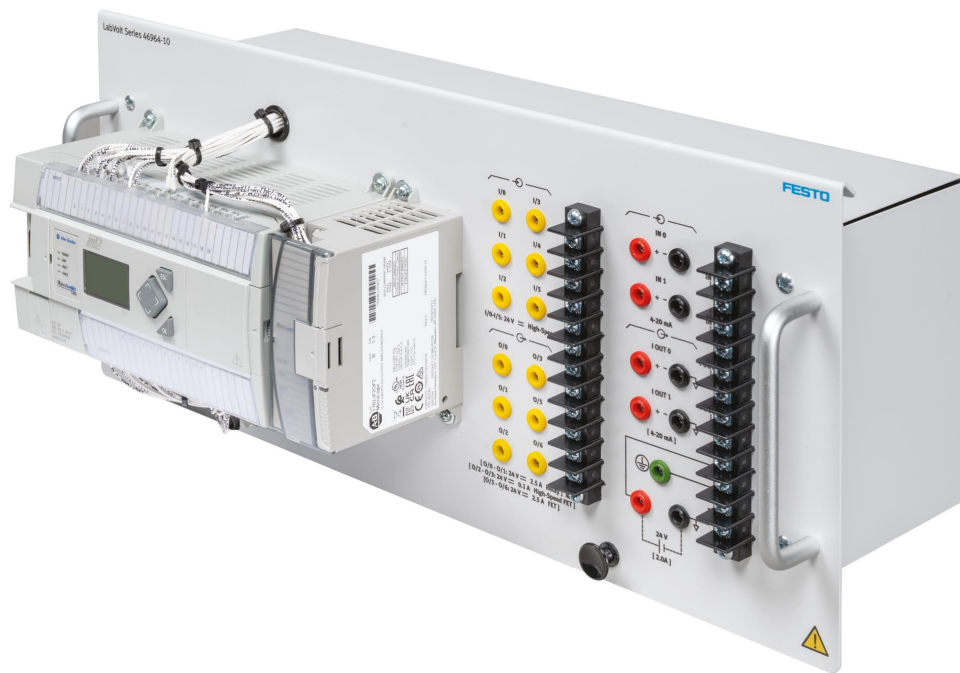
MicroLogix PLC Bundle – Commercial

588514 (3539-C0)

FESTO

LabVolt Series

Datasheet



* The product images shown in this document are for illustration purposes; actual products may vary. Please refer to the Specifications section of each product/item for all details. Festo Didactic reserves the right to change product images and specifications at any time without notice.

Festo Didactic
en
04/2025

General Description

This bundle includes a Micrologix 1400 PLC, one copy of RSLogix 500 (Commercial), and a user guide.

This bundle includes a compact programmable logic controller ideal for small- to mid-sized applications. The PLC features ten digital inputs, two analog inputs, six digital outputs, and two analog outputs. Programs for this PLC are written using Rockwell's RSLogix 500 software and can be used to implement a wide variety of control procedures, including PID routines. The PLC also features an Ethernet communication port, a DF1 Full-Duplex Serial link (RS-232-C) port, an embedded LCD and control keys, and many more advanced features. Eight fault insertion switches are hidden behind the module.

List of Equipment

Qty	Description	Model number
1	PLC Software (RSLogix Micro, Commercial) _____	587555 (3245-B0)
1	Communication Cable (Allen-Bradley) _____	587566 (3246-40)
1	Programmable Logic Controller (AB MicroLogix 1400) _____	8203776 (46964-10)

Manual

Description	Manual number
MicroLogix Programmable Logic Controller (User Guide) _____	585161 (86032-E0)

Additional Equipment Required to Perform the Exercises (Purchased separately)

Qty	Description	Model number
1	Touch-Screen Computer – Large _____	589677 (46299-A0)

Additional Equipment Required to Perform the Exercises (Purchased separately)

Qty	Description	Model number
1	Touch-Screen Computer – Large _____	589677 (46299-A0)

Additional Equipment Required to Perform the Exercises (Purchased separately)

Qty	Description	Model number
1	Touch-Screen Computer – Large _____	589677 (46299-A0)

Additional Equipment Required to Perform the Exercises (Purchased separately)

Qty	Description	Model number
1	Touch-Screen Computer – Large _____	589677 (46299-A0)

Additional Equipment Required to Perform the Exercises (Purchased separately)

Qty	Description	Model number
1	Touch-Screen Computer – Large _____	589677 (46299-A0)

Additional Equipment Required to Perform the Exercises (Purchased separately)

Qty	Description	Model number
1	Touch-Screen Computer – Large _____	589677 (46299-A0)

Additional Equipment Required to Perform the Exercises (Purchased separately)

Qty	Description	Model number
1	Touch-Screen Computer – Large _____	589677 (46299-A0)

Additional Equipment Required to Perform the Exercises (Purchased separately)

Qty	Description	Model number
1	Touch-Screen Computer – Large _____	589677 (46299-A0)

Additional Equipment Required to Perform the Exercises (Purchased separately)

Qty	Description	Model number
1	Touch-Screen Computer – Large _____	589677 (46299-A0)

Additional Equipment Required to Perform the Exercises (Purchased separately)

Qty	Description	Model number
1	Touch-Screen Computer – Large _____	589677 (46299-A0)

Additional Equipment Required to Perform the Exercises (Purchased separately)

Qty	Description	Model number
1	Touch-Screen Computer – Large _____	589677 (46299-A0)

Additional Equipment Required to Perform the Exercises (Purchased separately)

Qty	Description	Model number
1	Touch-Screen Computer – Large _____	589677 (46299-A0)

Additional Equipment Required to Perform the Exercises (Purchased separately)

Qty	Description	Model number
1	Touch-Screen Computer – Large _____	589677 (46299-A0)

Additional Equipment Required to Perform the Exercises (Purchased separately)

Qty	Description	Model number
1	Touch-Screen Computer – Large _____	589677 (46299-A0)

Additional Equipment Required to Perform the Exercises (Purchased separately)

Qty	Description	Model number
1	Touch-Screen Computer – Large _____	589677 (46299-A0)

Additional Equipment Required to Perform the Exercises (Purchased separately)

Qty	Description	Model number
1	Touch-Screen Computer – Large _____	589677 (46299-A0)

Additional Equipment Required to Perform the Exercises (Purchased separately)

Qty	Description	Model number
1	Touch-Screen Computer – Large _____	589677 (46299-A0)

Additional Equipment Required to Perform the Exercises (Purchased separately)

Qty	Description	Model number
1	Touch-Screen Computer – Large _____	589677 (46299-A0)

Additional Equipment Required to Perform the Exercises (Purchased separately)

Qty	Description	Model number
1	Touch-Screen Computer – Large _____	589677 (46299-A0)

Additional Equipment Required to Perform the Exercises (Purchased separately)

Qty	Description	Model number
1	Touch-Screen Computer – Large _____	589677 (46299-A0)

Additional Equipment Required to Perform the Exercises (Purchased separately)

Qty	Description	Model number
1	Touch-Screen Computer – Large _____	589677 (46299-A0)

Additional Equipment Required to Perform the Exercises (Purchased separately)

Qty	Description	Model number
1	Touch-Screen Computer – Large _____	589677 (46299-A0)

Additional Equipment Required to Perform the Exercises (Purchased separately)

Qty	Description	Model number
1	Touch-Screen Computer – Large _____	589677 (46299-A0)

Additional Equipment Required to Perform the Exercises (Purchased separately)

Qty	Description	Model number
1	Touch-Screen Computer – Large _____	589677 (46299-A0)

Additional Equipment Required to Perform the Exercises (Purchased separately)

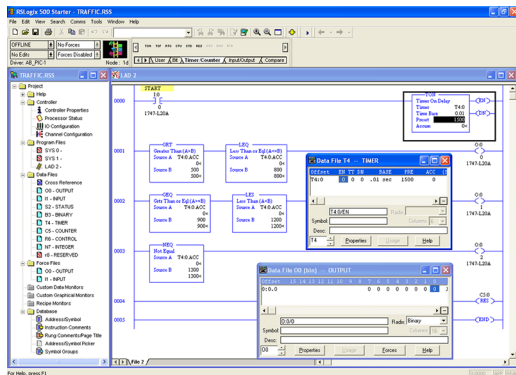
Qty	Description	Model number
1	Touch-Screen Computer – Large _____	589677 (46299-A0)

System Specifications

Parameter	Value
Power Requirement	
Current	1.5 A
Inputs	
Analog (2)	4-20 mA analog inputs
Digital (10)	24 V dc contact inputs
Outputs	
Analog (2)	4-20 mA analog outputs
Digital (6)	24 V dc relays (2 relays - 1.1 A, 2 high-speed FET relays - 0.1 A, 2 FET relays - 1.5 A)
Number of PID loops	2
Number of fault switches	8
Communication	RS232/RS485 protocols and Ethernet
Configuration	From a computer using RSLogix 500

Equipment Description

PLC Software (RSLogix Micro, Commercial) 587555 (3245-B0)



The RSLogix Micro software is a tool to design and implement ladder programs for the Allen-Bradley MicroLogix™ family of processors (it cannot be used with SLC 500 controllers), such as the Programmable Logic Controller (MicroLogix), Model 46964. It is a Windows®-based application, produced by Rockwell Software, that allows PLC programming using a personal computer.

The free-form ladder of RSLogix Micro lets students concentrate on the application logic rather than using the proper syntax when editing programs. Several other features of RSLogix Micro greatly facilitate PLC programming, such as a project verifier, drag-and-drop editing, and search-and-replace functions. The PLC can be programmed via either an RS-232 port or an Ethernet port on the PLC processor. This software comes with RSLinx™, which provides connectivity between the PLC and the computer.

The software is available with either an educational license (Model 3245-A) or as a commercial license (Model 3245-B).

Specifications

Parameter	Value
Computer Requirements	A currently available personal computer Pentium type with RS-232 serial port, running under one of the Microsoft® operating systems, Windows® 2000, Windows® XP, Windows® Vista or Windows® 7, is required.

**Communication Cable (Allen-Bradley)
587566 (3246-40)**



The communication cable is an RS-232-C serial cable specifically designed to connect a personal computer to an Allen-Bradley programmable logic controller, thus making it possible to program and monitor the PLC.

Specifications

Parameter	Value
Communication Cable	
Type	8 pin mini DIN to 9 pin D shell
Length	2 m (6.5 ft)

**Programmable Logic Controller (AB MicroLogix 1400)
8203776 (46964-10)**



This PLC features ten digital inputs, two analog inputs, six digital outputs, and two analog outputs. Programs for this PLC are written using Rockwell's RSLogix Micro software (Model 3245-A or -B) and can be used to implement a wide variety of control procedures, including PID routines. It includes an Ethernet communication port, a DF1 Full-Duplex Serial link (RS-232-C) port, an embedded LCD and control keys, and many more advanced features. Hidden behind the module is a total of eight switches that the instructor can use to insert faults in the system.

Optional Equipment Description

Touch-Screen Computer – Large (Optional) 589677 (46299-A0)



The Touch-Screen Computer is a solution for saving space in the classroom. It features a large 23-inch touch-screen and a high-speed processor. It can be installed on a full-motion mount, model 3451-A0 or 3451-B0, on the Instrumentation Workstation to maximize desk space.

Reflecting the commitment of Festo Didactic to high quality standards in product, design, development, production, installation, and service, our manufacturing and distribution facility has received the ISO 9001 certification.

Festo Didactic reserves the right to make product improvements at any time and without notice and is not responsible for typographical errors. Festo Didactic recognizes all product names used herein as trademarks or registered trademarks of their respective holders. © Festo Didactic Inc. 2025. All rights reserved.

Festo Didactic SE

Rechbergstrasse 3
73770 Denkendorf
Germany

P. +49(0)711/3467-0
F. +49(0)711/347-54-88500

Festo Didactic Inc.

607 Industrial Way West
Eatontown, NJ 07724
United States

P. +1-732-938-2000
F. +1-732-774-8573

Festo Didactic Ltée/Ltd

675 rue du Carbone
Québec QC G2N 2K7
Canada

P. +1-418-849-1000
F. +1-418-849-1666

www.labvolt.com

www.festo-didactic.com