

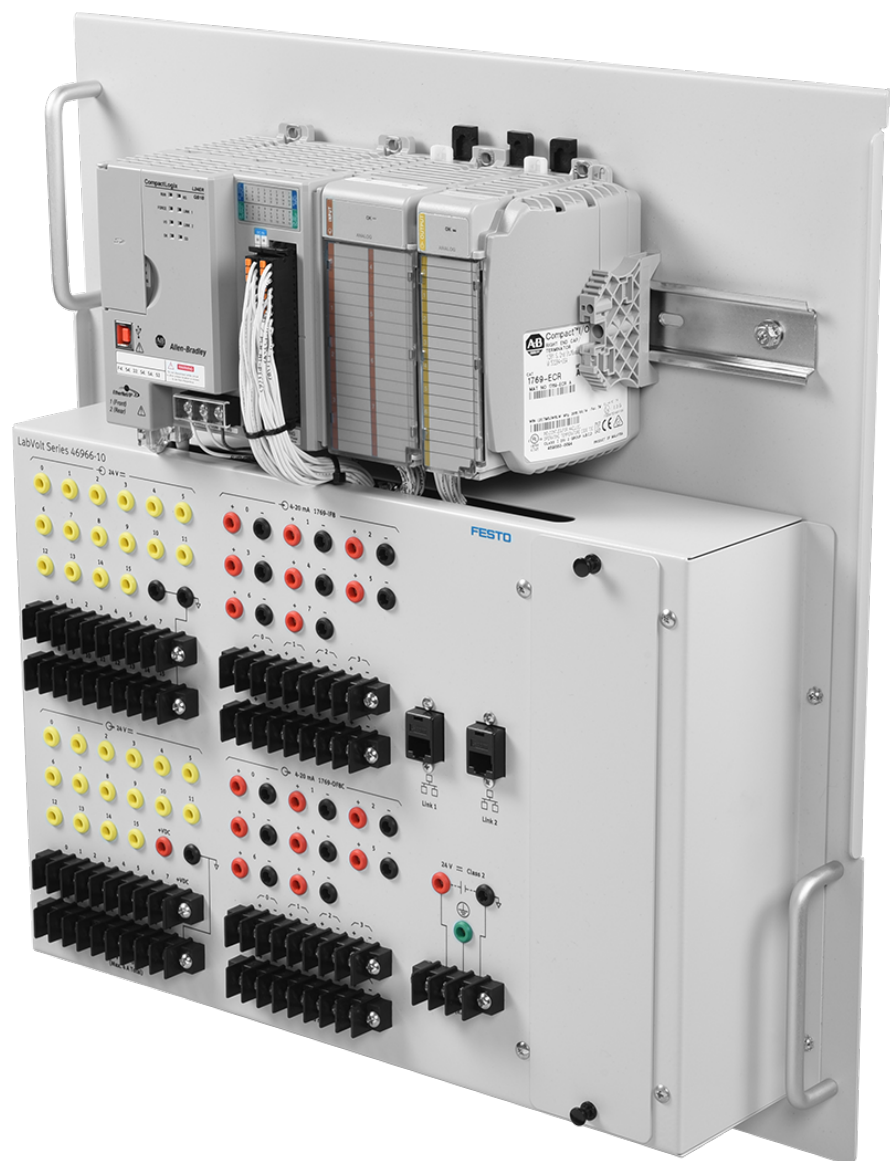
# CompactLogix PLC Bundle – Educational

588522 (3539-80)

**FESTO**

LabVolt Series

Datasheet



\* The product images shown in this document are for illustration purposes; actual products may vary. Please refer to the Specifications section of each product/item for all details. Festo Didactic reserves the right to change product images and specifications at any time without notice.

Festo Didactic  
en  
04/2025

# Table of Contents

<b>General Description</b>	<b>3</b>
<b>List of Equipment</b>	<b>3</b>
<b>Manual</b>	<b>3</b>
<b>Additional Equipment Required to Perform the Exercises (Purchased separately)</b>	<b>3</b>
<b>Additional Equipment Required to Perform the Exercises (Purchased separately)</b>	<b>3</b>
<b>Additional Equipment Required to Perform the Exercises (Purchased separately)</b>	<b>3</b>
<b>Additional Equipment Required to Perform the Exercises (Purchased separately)</b>	<b>3</b>
<b>Additional Equipment Required to Perform the Exercises (Purchased separately)</b>	<b>3</b>
<b>Additional Equipment Required to Perform the Exercises (Purchased separately)</b>	<b>3</b>
<b>Additional Equipment Required to Perform the Exercises (Purchased separately)</b>	<b>3</b>
<b>Additional Equipment Required to Perform the Exercises (Purchased separately)</b>	<b>4</b>
<b>Additional Equipment Required to Perform the Exercises (Purchased separately)</b>	<b>4</b>
<b>Additional Equipment Required to Perform the Exercises (Purchased separately)</b>	<b>4</b>
<b>Additional Equipment Required to Perform the Exercises (Purchased separately)</b>	<b>4</b>
<b>Additional Equipment Required to Perform the Exercises (Purchased separately)</b>	<b>4</b>
<b>Additional Equipment Required to Perform the Exercises (Purchased separately)</b>	<b>4</b>
<b>Additional Equipment Required to Perform the Exercises (Purchased separately)</b>	<b>4</b>
<b>Additional Equipment Required to Perform the Exercises (Purchased separately)</b>	<b>4</b>
<b>Additional Equipment Required to Perform the Exercises (Purchased separately)</b>	<b>4</b>
<b>Additional Equipment Required to Perform the Exercises (Purchased separately)</b>	<b>4</b>
<b>Additional Equipment Required to Perform the Exercises (Purchased separately)</b>	<b>4</b>
<b>Additional Equipment Required to Perform the Exercises (Purchased separately)</b>	<b>4</b>
<b>Additional Equipment Required to Perform the Exercises (Purchased separately)</b>	<b>4</b>
<b>Additional Equipment Required to Perform the Exercises (Purchased separately)</b>	<b>5</b>
<b>Additional Equipment Required to Perform the Exercises (Purchased separately)</b>	<b>5</b>
<b>Additional Equipment Required to Perform the Exercises (Purchased separately)</b>	<b>5</b>
<b>Additional Equipment Required to Perform the Exercises (Purchased separately)</b>	<b>5</b>
<b>Additional Equipment Required to Perform the Exercises (Purchased separately)</b>	<b>5</b>
<b>Additional Equipment Required to Perform the Exercises (Purchased separately)</b>	<b>5</b>
<b>Additional Equipment Required to Perform the Exercises (Purchased separately)</b>	<b>5</b>
<b>Additional Equipment Required to Perform the Exercises (Purchased separately)</b>	<b>5</b>
<b>System Specifications</b>	<b>5</b>
<b>Equipment Description</b>	<b>6</b>
<b>Optional Equipment Description</b>	<b>7</b>

## General Description

This bundle includes a CompactLogix PLC, one copy of RSLogix 5000 Lite Edition, and a user guide.

## List of Equipment

Qty	Description	Model number
1	ControlLogix and CompactLogix Programmable Logic Controllers (User Guide) _____	585159 (86030-E0)
1	Studio 5000 Logix Designer Lite Edition _____	587890 (5935-00)
1	Programmable Logic Controller (AB CompactLogix) _____	589123 (46966-10)

## Manual

Description	Manual number
ControlLogix and CompactLogix Programmable Logic Controllers (User Guide) _____	585159 (86030-E0)

## Additional Equipment Required to Perform the Exercises (Purchased separately)

Qty	Description	Model number
1	Touch-Screen Computer – Large _____	589677 (46299-A0)

## Additional Equipment Required to Perform the Exercises (Purchased separately)

Qty	Description	Model number
1	Touch-Screen Computer – Large _____	589677 (46299-A0)

## Additional Equipment Required to Perform the Exercises (Purchased separately)

Qty	Description	Model number
1	Touch-Screen Computer – Large _____	589677 (46299-A0)

## Additional Equipment Required to Perform the Exercises (Purchased separately)

Qty	Description	Model number
1	Touch-Screen Computer – Large _____	589677 (46299-A0)

## Additional Equipment Required to Perform the Exercises (Purchased separately)

Qty	Description	Model number
1	Touch-Screen Computer – Large _____	589677 (46299-A0)

## Additional Equipment Required to Perform the Exercises (Purchased separately)

Qty	Description	Model number
1	Touch-Screen Computer – Large _____	589677 (46299-A0)

## Additional Equipment Required to Perform the Exercises (Purchased separately)

Qty	Description	Model number
1	Touch-Screen Computer – Large _____	589677 (46299-A0)

### **Additional Equipment Required to Perform the Exercises (Purchased separately)**

<b>Qty</b>	<b>Description</b>	<b>Model number</b>
1	Touch-Screen Computer – Large _____	589677 (46299-A0)

### **Additional Equipment Required to Perform the Exercises (Purchased separately)**

<b>Qty</b>	<b>Description</b>	<b>Model number</b>
1	Touch-Screen Computer – Large _____	589677 (46299-A0)

### **Additional Equipment Required to Perform the Exercises (Purchased separately)**

<b>Qty</b>	<b>Description</b>	<b>Model number</b>
1	Touch-Screen Computer – Large _____	589677 (46299-A0)

### **Additional Equipment Required to Perform the Exercises (Purchased separately)**

<b>Qty</b>	<b>Description</b>	<b>Model number</b>
1	Touch-Screen Computer – Large _____	589677 (46299-A0)

### **Additional Equipment Required to Perform the Exercises (Purchased separately)**

<b>Qty</b>	<b>Description</b>	<b>Model number</b>
1	Touch-Screen Computer – Large _____	589677 (46299-A0)

### **Additional Equipment Required to Perform the Exercises (Purchased separately)**

<b>Qty</b>	<b>Description</b>	<b>Model number</b>
1	Touch-Screen Computer – Large _____	589677 (46299-A0)

### **Additional Equipment Required to Perform the Exercises (Purchased separately)**

<b>Qty</b>	<b>Description</b>	<b>Model number</b>
1	Touch-Screen Computer – Large _____	589677 (46299-A0)

### **Additional Equipment Required to Perform the Exercises (Purchased separately)**

<b>Qty</b>	<b>Description</b>	<b>Model number</b>
1	Touch-Screen Computer – Large _____	589677 (46299-A0)

### **Additional Equipment Required to Perform the Exercises (Purchased separately)**

<b>Qty</b>	<b>Description</b>	<b>Model number</b>
1	Touch-Screen Computer – Large _____	589677 (46299-A0)

### **Additional Equipment Required to Perform the Exercises (Purchased separately)**

<b>Qty</b>	<b>Description</b>	<b>Model number</b>
1	Touch-Screen Computer – Large _____	589677 (46299-A0)

### Additional Equipment Required to Perform the Exercises (Purchased separately)

Qty	Description	Model number
1	Touch-Screen Computer – Large _____	589677 (46299-A0)

### Additional Equipment Required to Perform the Exercises (Purchased separately)

Qty	Description	Model number
1	Touch-Screen Computer – Large _____	589677 (46299-A0)

### Additional Equipment Required to Perform the Exercises (Purchased separately)

Qty	Description	Model number
1	Touch-Screen Computer – Large _____	589677 (46299-A0)

### Additional Equipment Required to Perform the Exercises (Purchased separately)

Qty	Description	Model number
1	Touch-Screen Computer – Large _____	589677 (46299-A0)

### Additional Equipment Required to Perform the Exercises (Purchased separately)

Qty	Description	Model number
1	Touch-Screen Computer – Large _____	589677 (46299-A0)

### Additional Equipment Required to Perform the Exercises (Purchased separately)

Qty	Description	Model number
1	Touch-Screen Computer – Large _____	589677 (46299-A0)

### Additional Equipment Required to Perform the Exercises (Purchased separately)

Qty	Description	Model number
1	Touch-Screen Computer – Large _____	589677 (46299-A0)

### Additional Equipment Required to Perform the Exercises (Purchased separately)

Qty	Description	Model number
1	Touch-Screen Computer – Large _____	589677 (46299-A0)

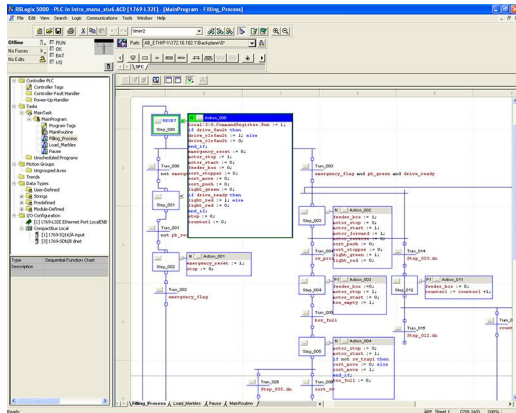
### System Specifications

Parameter	Value
<b>Power Requirement</b>	
Current	2.1 A
<b>Inputs</b>	
Analog (8)	4-20 mA analog inputs
Digital (16)	24 V dc contact inputs
<b>Outputs</b>	
Analog (8)	4-20 mA analog outputs
Digital (16)	24 V dc relays
<b>Number of PID loops</b>	8

Parameter	Value
Number of fault switches	10
Communication	Ethernet
Configuration	From a computer using RSLogix 5000

## Equipment Description

### Studio 5000 Logix Designer Lite Edition 587890 (5935-00)



Studio 5000 Logix Designer is a Windows-based application, produced by Rockwell Software™, used to build programs for CompactLogix PLCs.

Studio 5000 Logix Designer provides a powerful integrated interface allowing users to easily build programs using four programming languages: relay ladder, structured text, sequential function chart, and function block diagram. The software allows students to concentrate on the logic aspects of PLC programming instead of spending time on complex syntax. It also features drag-and-drop editing, search-and-replace functions, and tools for verifying programs before running them on a PLC. Studio 5000 Logix Designer can be used to program a

PLC via the built-in RS-232 port or via an Ethernet link. The software comes with RSLinx lite which provides the functionality required to support RSLogix and RSNetWorx.

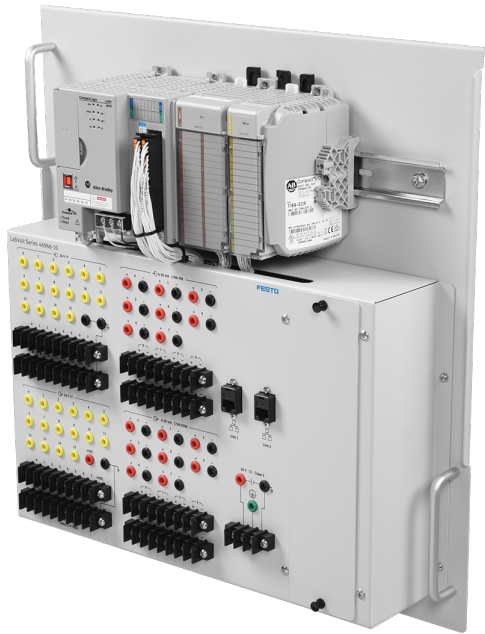
The following versions are available:

- 5935-0: Studio 5000 Logix Designer Lite Edition (Educationnal)
- 5935-A: Studio 5000 Logix Designer Lite Edition (Commercial)
- 5935-1: Studio 5000 Logix Designer Full Edition (Educationnal)
- 5935-B: Studio 5000 Logix Designer Full Edition (Commercial)

## Specifications

Parameter	Value
Included Software	RSLogix 5000 and RSLinx Lite
Available Languages	Relay ladder, structured text, sequential function chart, and function block diagram.
Computer Requirements	A currently available personal computer running under one of the following operating systems: Windows® 7 or Windows® 8.

## Programmable Logic Controller (AB CompactLogix) 589123 (46966-10)



The AB CompactLogix PLC is a cost-effective controller from the Allen-Bradley family of Logix controllers. This PLC features a L24 CPU and includes sixteen 24 V dc digital inputs and sixteen 24 V dc digital output relays hardwired to both banana jacks and terminal blocks on the module front panel. Banana jacks provide an easy and fast way to wire a setup, while terminal blocks allow students to wire their setup in a way much closer to what is commonly found in the industry. A total of eight 4-20 mA analog inputs and eight 4-20 mA analog outputs are also included.

The CompactLogix PLC supports Ethernet/IP network communication. The two Ethernet/IP ports are located on the front panel to make the cabling more convenient.

The CompactLogix PLC is programmed with Rockwell's RSLogix 5000 Lite Edition software (Model 5935 or -A) using any of four languages: Relay ladder, structured text, sequential function chart, and function block diagram. This module has ten switches that the instructor can use to insert faults.

## Optional Equipment Description

### Touch-Screen Computer – Large (Optional) 589677 (46299-A0)



The Touch-Screen Computer is a solution for saving space in the classroom. It features a large 23-inch touch-screen and a high-speed processor. It can be installed on a full-motion mount, model 3451-A0 or 3451-B0, on the Instrumentation Workstation to maximize desk space.

Reflecting the commitment of Festo Didactic to high quality standards in product, design, development, production, installation, and service, our manufacturing and distribution facility has received the ISO 9001 certification.

Festo Didactic reserves the right to make product improvements at any time and without notice and is not responsible for typographical errors. Festo Didactic recognizes all product names used herein as trademarks or registered trademarks of their respective holders. © Festo Didactic Inc. 2025. All rights reserved.

**Festo Didactic SE**

Rechbergstrasse 3  
73770 Denkendorf  
Germany

P. +49(0)711/3467-0  
F. +49(0)711/347-54-88500

**Festo Didactic Inc.**

607 Industrial Way West  
Eatontown, NJ 07724  
United States

P. +1-732-938-2000  
F. +1-732-774-8573

**Festo Didactic Ltée/Ltd**

675 rue du Carbone  
Québec QC G2N 2K7  
Canada

P. +1-418-849-1000  
F. +1-418-849-1666

**[www.labvolt.com](http://www.labvolt.com)**

**[www.festo-didactic.com](http://www.festo-didactic.com)**