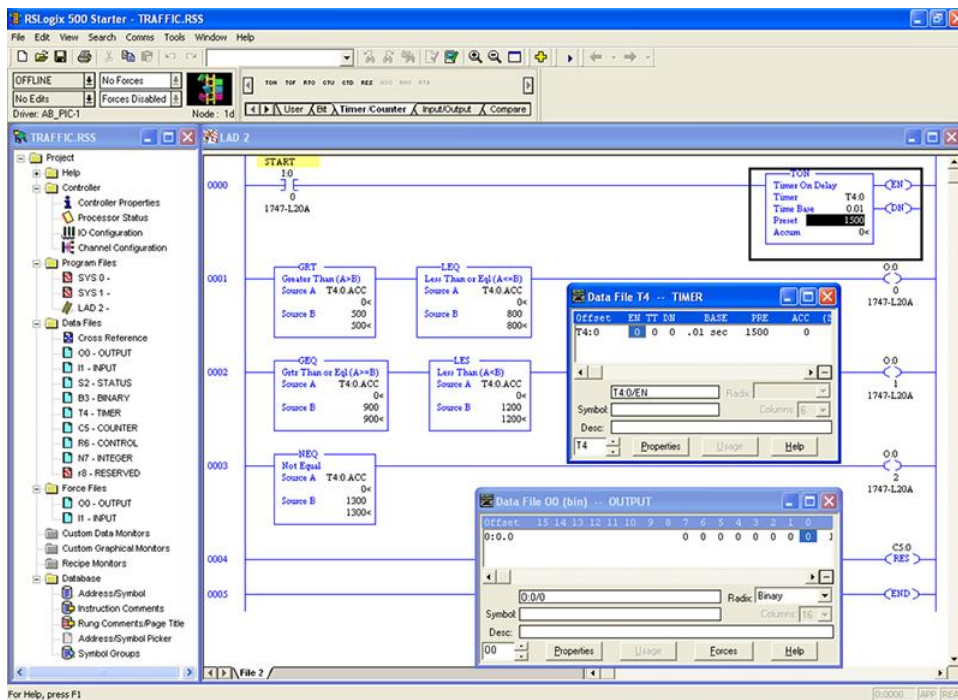


PLC Software (RSLogix Micro) 3245-A0



LabVolt Series

Datasheet



Festo Didactic
en
03/2025

* The product images shown in this document are for illustration purposes; actual products may vary. Please refer to the Specifications section of each product/item for all details. Festo Didactic reserves the right to change product images and specifications at any time without notice.

Table of Contents

General Description	3
List of Available Training Systems	3
Equipment Description	3

General Description

The RSLogix Micro software is a tool to design and implement ladder programs for the Allen-Bradley MicroLogix™ family of processors (can not be used with SLC 500 controllers), such as the Programmable Logic Controller (MicroLogix), Model 46964. It is a Windows®-based application produced by Rockwell Software that allows PLC programming using a personal computer. The free-form ladder of RSLogix Micro lets the student concentrate on the application logic rather than on using the proper syntax when editing programs. Several other features of RSLogix Micro, such as a project verifier, drag-and-drop editing, and search-and-replace functions, greatly facilitate PLC programming. The PLC can be programmed via either a RS-232 port or an Ethernet port on the PLC processor. This software comes with RSLinx™ which provides connectivity between the PLC and the PC-type computer. The software is available with either an educational license (Model 3245-A) or as a commercial version (Model 3245-B).

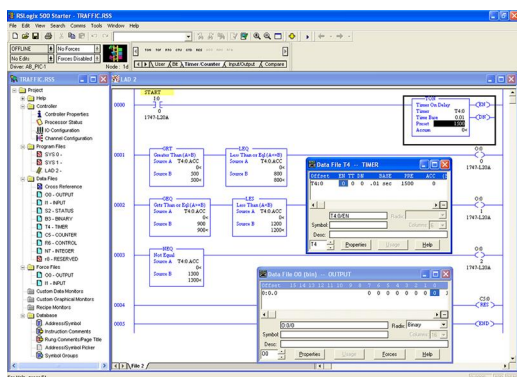
This software is the recommended editing tool for any MicroLogix controllers within the Lab-Volt product line.

List of Available Training Systems

Qty	Description	Model number
1	PLC Software (RSLogix Micro, Educational)	587552 (3245-A0)
1	PLC Software (RSLogix Micro, Commercial)	587555 (3245-B0)

Equipment Description

PLC Software (RSLogix Micro, Educational) 587552 (3245-A0)



The RSLogix Micro software is a tool to design and implement ladder programs for the Allen-Bradley MicroLogix™ family of processors (it cannot be used with SLC 500 controllers). It is a Windows®-based application produced by Rockwell Software that allows PLC programming using a personal computer.

The free-form ladder of RSLogix Micro lets students concentrate on the application logic rather than using the proper syntax when editing programs. Several other features of RSLogix Micro greatly facilitate PLC programming, such as a project verifier, drag-and-drop editing, and search-and-replace functions. The PLC can be programmed via either an RS-232 port or an Ethernet

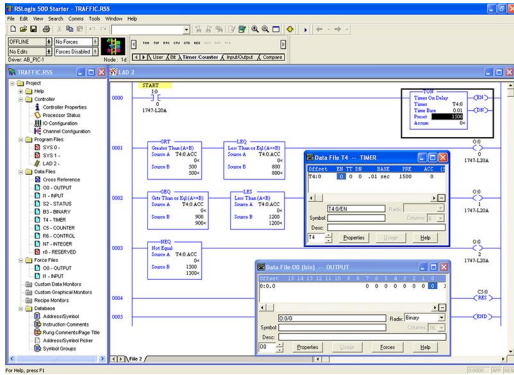
port on the PLC processor. This software comes with RSLinx™, which provides connectivity between the PLC and the computer.

The software is available with either an educational license (Model 3245-A) or as a commercial license (Model 3245-B).

Specifications

Parameter	Value
Computer Requirements	A currently available personal computer with USB 2.0 ports, running under one of the following operating systems: Windows® 7 or Windows® 8.

PLC Software (RSLogix Micro, Commercial) 587555 (3245-B0)



The RSLogix Micro software is a tool to design and implement ladder programs for the Allen-Bradley MicroLogix™ family of processors (it cannot be used with SLC 500 controllers), such as the Programmable Logic Controller (MicroLogix), Model 46964. It is a Windows®-based application, produced by Rockwell Software, that allows PLC programming using a personal computer.

The free-form ladder of RSLogix Micro lets students concentrate on the application logic rather than using the proper syntax when editing programs. Several other features of RSLogix Micro greatly facilitate PLC programming, such as a project verifier,

drag-and-drop editing, and search-and-replace functions. The PLC can be programmed via either an RS-232 port or an Ethernet port on the PLC processor. This software comes with RSLinx™, which provides connectivity between the PLC and the computer.

The software is available with either an educational license (Model 3245-A) or as a commercial license (Model 3245-B).

Specifications

Parameter	Value
Computer Requirements	A currently available personal computer Pentium type with RS-232 serial port, running under one of the Microsoft® operating systems, Windows® 2000, Windows® XP, Windows® Vista or Windows® 7, is required.

Reflecting the commitment of Festo Didactic to high quality standards in product, design, development, production, installation, and service, our manufacturing and distribution facility has received the ISO 9001 certification.

Festo Didactic reserves the right to make product improvements at any time and without notice and is not responsible for typographical errors. Festo Didactic recognizes all product names used herein as trademarks or registered trademarks of their respective holders. © Festo Didactic Inc. 2025. All rights reserved.

Festo Didactic SE

Rechbergstrasse 3
73770 Denkendorf
Germany

P. +49(0)711/3467-0
F. +49(0)711/347-54-88500

Festo Didactic Inc.

607 Industrial Way West
Eatontown, NJ 07724
United States

P. +1-732-938-2000
F. +1-732-774-8573

Festo Didactic Ltée/Ltd

675 rue du Carbone
Québec QC G2N 2K7
Canada

P. +1-418-849-1000
F. +1-418-849-1666

www.labvolt.com

www.festo-didactic.com