

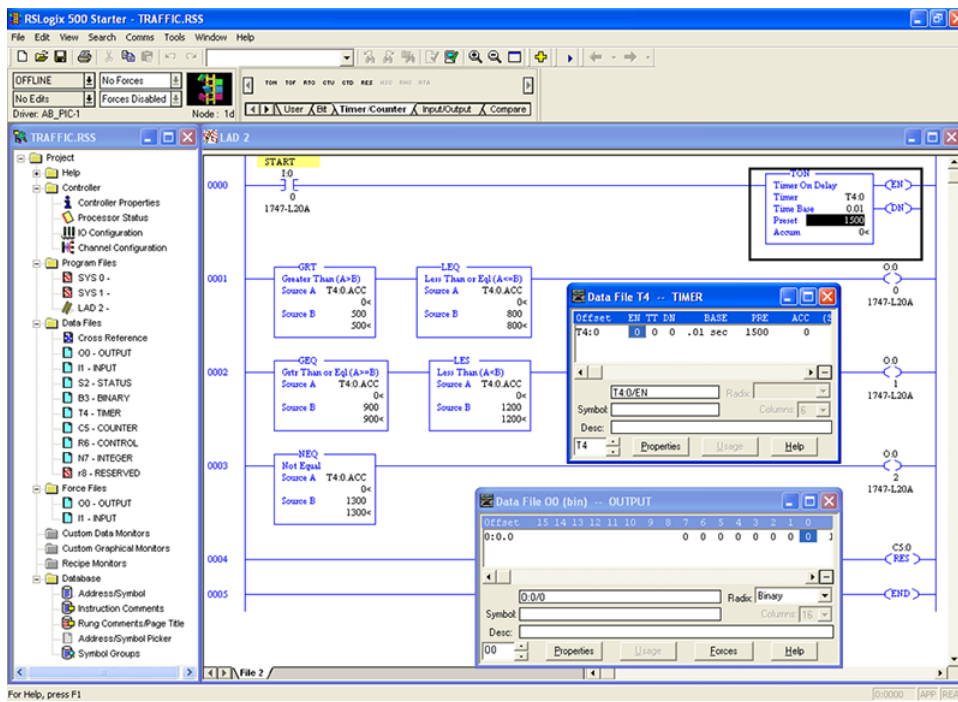
PLC Software (RSLogix 500)

3245-C0



LabVolt Series

Datasheet



Festo Didactic
en
11/2024

* The product images shown in this document are for illustration purposes; actual products may vary. Please refer to the Specifications section of each product/item for all details. Festo Didactic reserves the right to change product images and specifications at any time without notice.

Table of Contents

General Description	3
List of Available Training Systems	3
Equipment Description	3

General Description

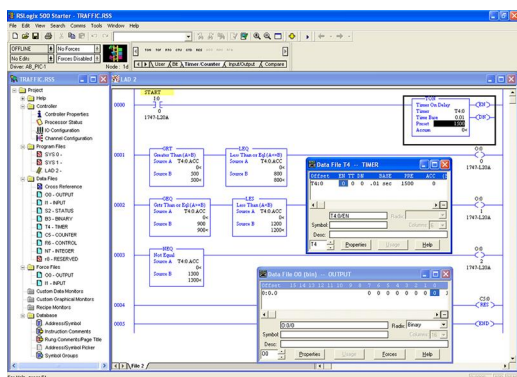
The RSLogix 500 software is a tool to design and implement ladder programs for the Allen-Bradley SLC 500™ and MicroLogix™ family of processors, such as the Programmable Logic Controller (MicroLogix), Model 46964. It is a Windows®-based application, produced by Rockwell Software, that allows PLC programming using a personal computer. The free-form ladder of RSLogix 500 lets the student concentrate on the application logic rather than on using the proper syntax when editing programs. Several other features of RSLogix 500, such as a project verifier, drag-and-drop editing, and search-and-replace functions, greatly facilitate PLC programming. The PLC can be programmed via either a RS-232 port or an Ethernet port on the PLC processor. This software comes with RSLinx™ which provides connectivity between the PLC and the PC-type computer. The software is available with either an educational license (Model 3245-C) or as a commercial version (Model 3245-D).

List of Available Training Systems

Qty	Description	Model number
1	PLC Software (RSLogix 500, educational)	587558 (3245-C0)
1	PLC Software (RSLogix 500, commercial)	587561 (3245-D0)

Equipment Description

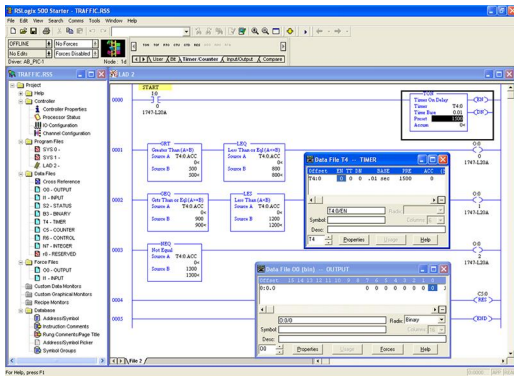
PLC Software (RSLogix 500, educational) 587558 (3245-C0)



The RSLogix 500 software is an efficient tool to design and implement ladder programs for the Allen-Bradley SLC 500™ and MicroLogix™ family of processors, such as the Programmable Logic Controller (MicroLogix), Model 46964. It is a Windows®-based application, produced by Rockwell Software, that allows a PLC to be programmed using a PC-type computer. The free-form ladder of RSLogix 500 lets the student concentrate on the application logic rather than on using the proper syntax when editing programs. Several other features of RSLogix 500, such as a powerful project verifier, drag-and-drop editing, and search-and-replace functions, greatly facilitate PLC

programming. The PLC can be programmed via either a RS-232 port or an Ethernet port on the PLC processor. This software comes with RSLinx™ which provides connectivity between the PLC and the PC-type computer. The software is available with either an educational license (Model 3245-C) or as a commercial version (Model 3245-D).

PLC Software (RSLogix 500, commercial) 587561 (3245-D0)



The RSLogix 500 software is an efficient tool to design and implement ladder programs for the Allen-Bradley SLC 500™ and MicroLogix™ family of processors, such as the Programmable Logic Controller (MicroLogix), Model 46964. It is a Windows®-based application, produced by Rockwell Software, that allows PLC programming using a personal computer. The free-form ladder of RSLogix 500 lets the student concentrate on the application logic rather than on using the proper syntax when editing programs. Several other features of RSLogix 500, such as a powerful project verifier, drag-and-drop editing, and search-and-replace functions, greatly facilitate PLC

programming. The PLC can be programmed via either a RS-232 port or an Ethernet port on the PLC processor. This software comes with RSLinx™ which provides connectivity between the PLC and the PC-type computer. The software is available with either an educational license (Model 3245-C) or as a commercial version (Model 3245-D).

Reflecting the commitment of Festo Didactic to high quality standards in product, design, development, production, installation, and service, our manufacturing and distribution facility has received the ISO 9001 certification.

Festo Didactic reserves the right to make product improvements at any time and without notice and is not responsible for typographical errors. Festo Didactic recognizes all product names used herein as trademarks or registered trademarks of their respective holders. © Festo Didactic Inc. 2024. All rights reserved.

Festo Didactic SE

Rechbergstrasse 3
73770 Denkendorf
Germany

P. +49(0)711/3467-0
F. +49(0)711/347-54-88500

Festo Didactic Inc.

607 Industrial Way West
Eatontown, NJ 07724
United States

P. +1-732-938-2000
F. +1-732-774-8573

Festo Didactic Ltée/Ltd

675 rue du Carbone
Québec QC G2N 2K7
Canada

P. +1-418-849-1000
F. +1-418-849-1666

www.labvolt.com

www.festo-didactic.com