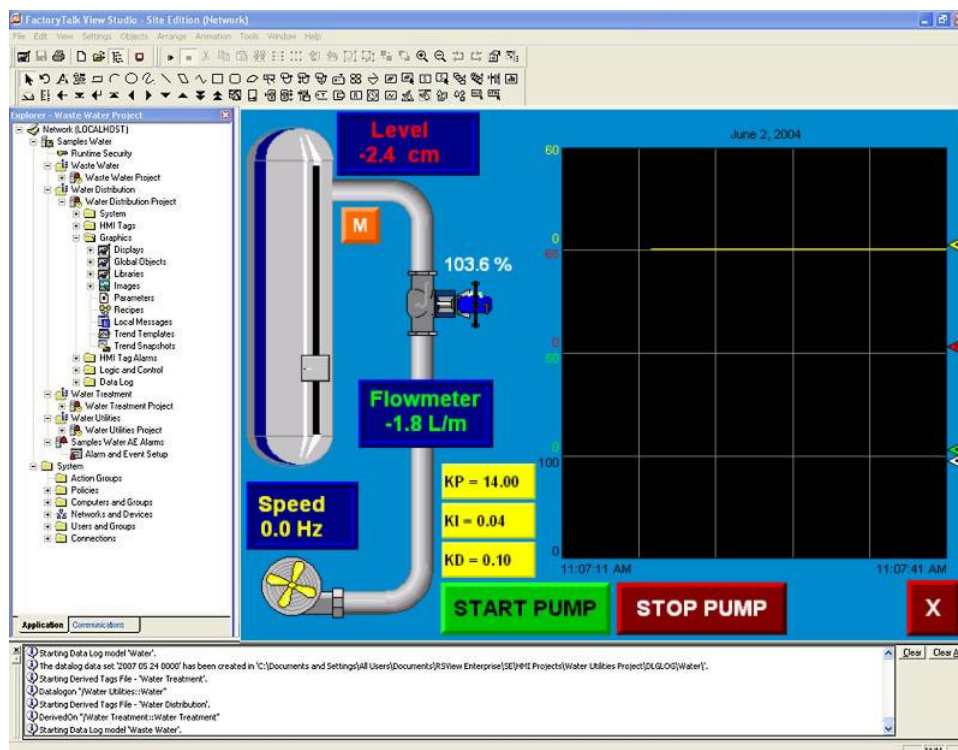


# FactoryTalk View Studio ME 5937

# FESTO

LabVolt Series

Datasheet



Festo Didactic  
en  
12/2024

\* The product images shown in this document are for illustration purposes; actual products may vary. Please refer to the Specifications section of each product/item for all details. Festo Didactic reserves the right to change product images and specifications at any time without notice.

## Table of Contents

<b>General Description</b>	<b>3</b>
<b>List of Available Training Systems</b>	<b>3</b>
<b>Equipment Description</b>	<b>3</b>

## General Description

FactoryTalk View Machine Edition is a Windows®-based application produced by Rockwell Software that allows the creation of graphic interfaces. The HMI applications created can display and exchange data over the Ethernet network. Two variants are available:

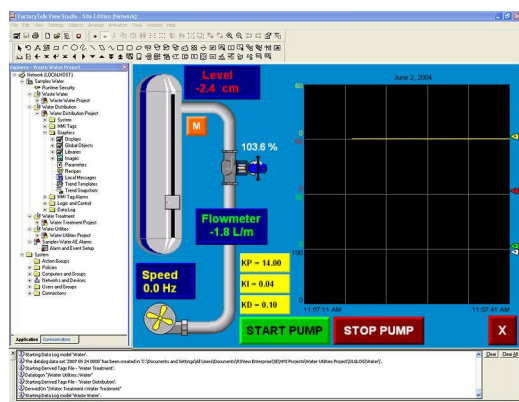
- FactoryTalk View Studio, Model 5937-0 and -A – Software for creating, maintaining, and testing HMI applications.
- FactoryTalk View ME Station, Model 5937-1 and -B – Software running HMI applications created with FactoryTalk View Studio on a computer.

## List of Available Training Systems

Qty	Description	Model number
1	FactoryTalk View Studio ME _____	587898 (5937-00)
1	FactoryTalk View Studio ME (Commercial) _____	587899 (5937-A0)

## Equipment Description

### FactoryTalk View Studio ME 587898 (5937-00)

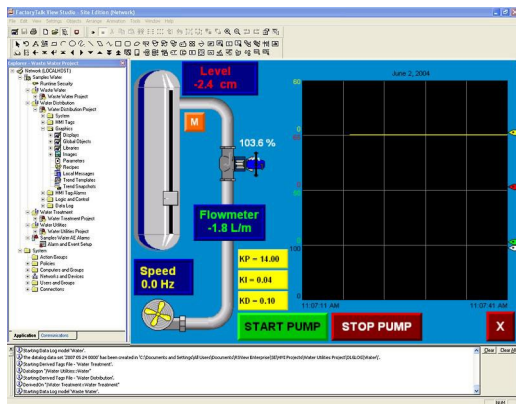


FactoryTalk View Studio ME is a Windows-based application, produced by Rockwell Software, allowing the creation of graphic interfaces for the Touch Screen Graphic Terminal, Model 5922. Using programs developed with FactoryTalk View Studio ME, data available over the network can be displayed on the screen and commands can be sent over the Ethernet network.

## Specifications

Parameter	Value
Computer Requirements	A currently available personal computer running under one of the following operating systems: Windows® 7 or Windows® 8.

## FactoryTalk View Studio ME (Commercial) 587899 (5937-A0)



FactoryTalk View Studio ME (Commercial) is a Windows-based application, produced by Rockwell Software, allowing the creation of graphic interfaces for the Touch Screen Graphic Terminal, Model 5922. Using programs developed with FactoryTalk View Studio ME (Commercial), data available over the network can be displayed on the screen and commands can be sent over the Ethernet network.

Reflecting the commitment of Festo Didactic to high quality standards in product, design, development, production, installation, and service, our manufacturing and distribution facility has received the ISO 9001 certification.

Festo Didactic reserves the right to make product improvements at any time and without notice and is not responsible for typographical errors. Festo Didactic recognizes all product names used herein as trademarks or registered trademarks of their respective holders. © Festo Didactic Inc. 2024. All rights reserved.

**Festo Didactic SE**

Rechbergstrasse 3  
73770 Denkendorf  
Germany

P. +49(0)711/3467-0  
F. +49(0)711/347-54-88500

**Festo Didactic Inc.**

607 Industrial Way West  
Eatontown, NJ 07724  
United States

P. +1-732-938-2000  
F. +1-732-774-8573

**Festo Didactic Ltée/Ltd**

675 rue du Carbone  
Québec QC G2N 2K7  
Canada

P. +1-418-849-1000  
F. +1-418-849-1666

**[www.labvolt.com](http://www.labvolt.com)**

**[www.festo-didactic.com](http://www.festo-didactic.com)**