

Multiple-Pump Systems - add-on 8180036 (46107-20)

FESTO

LabVolt Series

Datasheet



* The product images shown in this document are for illustration purposes; actual products may vary. Please refer to the Specifications section of each product/item for all details. Festo Didactic reserves the right to change product images and specifications at any time without notice.

Festo Didactic
en
11/2024

Table of Contents

General Description	3
List of Equipment	3
Equipment Description	4

General Description

The Multiple-Pump Systems is an add-on to the Single-Pump Systems. It consists of a motor, a centrifugal pump, a check valve, and accessories. These components are required to understand pressure losses, and the characteristics of pumps installed in series or in parallel.

The project-based pedagogical approach makes it possible to contextualize the tasks performed by the learner. The exercises develop fundamental skills required for workers interacting with any industrial process involving pumps.

Features:

- Pump mounts directly on the motor shaft and does not require alignment
- Quick connect cam lever couplings for easy hose and pipe connections
- Industrial-grade components for a realistic learning experience
- Single tool to secure components on the worksurface for quick assembly
- 5S-type storage for all components in lockable drawers to keep the workspace tidy and organized

Learning outcomes:

- Measure pressure losses and understand their causes and consequences.
- Install pumps in parallel and compare their pressure and flow characteristics to a Single-Pump setup.
- Install pumps in series and compare their pressure and flow characteristics to a Single-Pump setup.
- Learn to choose a pump for a specific application.
- Present solutions for a tank replacement and identify the consequences on an existing pumping circuit

List of Equipment

Qty	Description	Model number
1	Motor and Pump Assembly (Multiple-Pump) _____	8180051 (47421-00)
2	Check Valve Assembly _____	8180053 (47423-00)
1	Multiple-Pump Systems Accessories _____	8180054 (47429-00)

Equipment Description

Motor and Pump Assembly (Multiple-Pump) 8180051 (47421-00)

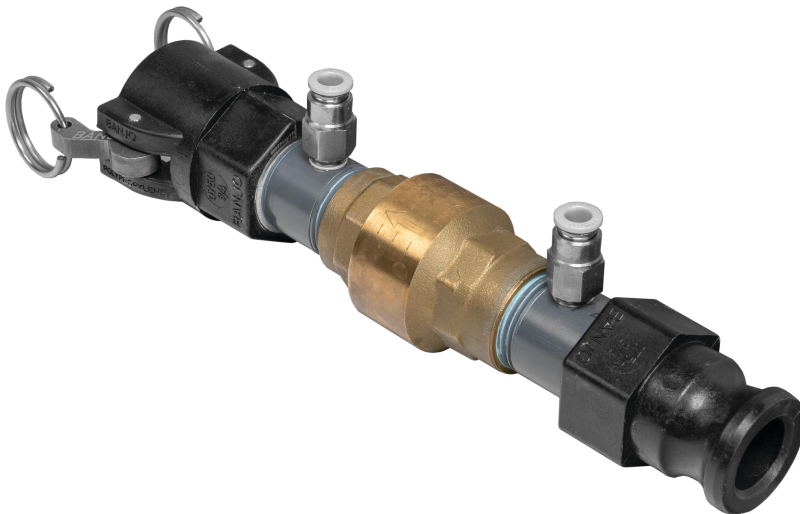


The Motor and Pump Assembly (Multiple-Pump) consists of a mounting base, a motor, and a centrifugal pump directly mounted to the motor frame. The assembly is designed to be secured to the perforated worksurface.

Features:

- Quick installation of mounting base to worksurface with single rotating knob
- Pump has quick disconnect cam lever couplings for easy hose and pipe connections

Check Valve Assembly 8180053 (47423-00)

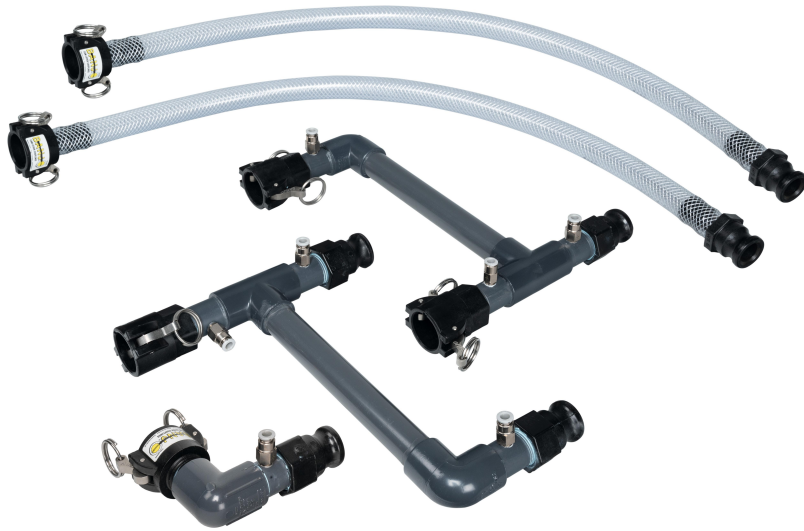


The Check Valve Assembly is used to allow water flow in one direction and block it in the other.

Features:

- Quick connect cam lever couplings for easy hose and pipe connections
- Quick connect push-in fitting for easy pneumatic tubing connections

Multiple-Pump Systems Accessories
8180054 (47429-00)



The Multiple-Pump Systems Accessories consists of components required to assemble and interconnect the components of the piping circuits for the Multiple-Pump Systems.

Reflecting the commitment of Festo Didactic to high quality standards in product, design, development, production, installation, and service, our manufacturing and distribution facility has received the ISO 9001 certification.

Festo Didactic reserves the right to make product improvements at any time and without notice and is not responsible for typographical errors. Festo Didactic recognizes all product names used herein as trademarks or registered trademarks of their respective holders. © Festo Didactic Inc. 2024. All rights reserved.

Festo Didactic SE

Rechbergstrasse 3
73770 Denkendorf
Germany

P. +49(0)711/3467-0
F. +49(0)711/347-54-88500

Festo Didactic Inc.

607 Industrial Way West
Eatontown, NJ 07724
United States

P. +1-732-938-2000
F. +1-732-774-8573

Festo Didactic Ltée/Ltd

675 rue du Carbone
Québec QC G2N 2K7
Canada

P. +1-418-849-1000
F. +1-418-849-1666

www.labvolt.com

www.festo-didactic.com