

Release date: 2013-07-08
Affected software: LVDAC-EMS

Brief description of the problem:

Display problems may occur with high resolution screen and font size above 96 pixels per inch (100%).

Full description of the problem:

When a small high resolution screen is used with Windows font size set to a different value than 96 DPI, LVDAC-EMS may have a poor interface layout like rotary knobs and button overlapping and meters missing part.

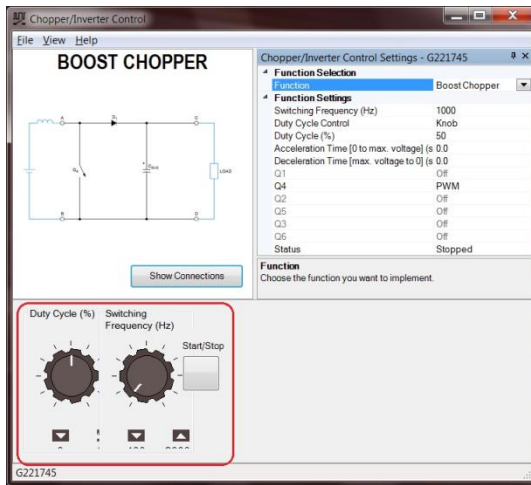


Figure 1: Rotary knobs and button overlapping

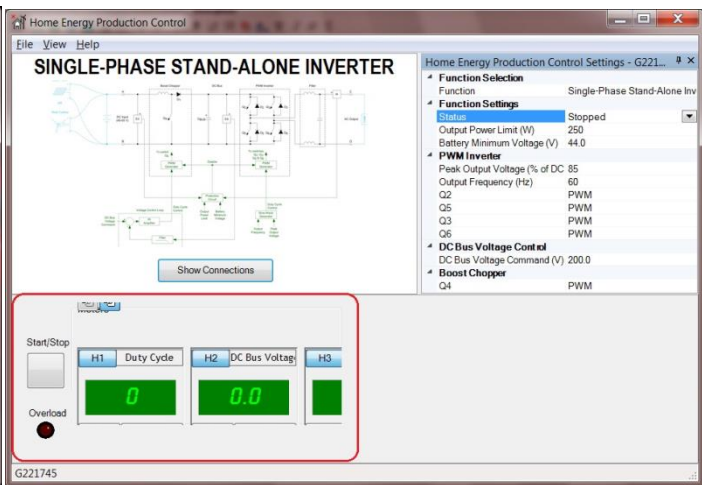


Figure 2: Meter missing part

How to fix:

Windows XP

Go to *Control Panel* and click on *Display*, then click on *Appearance* tab and select *Normal* font size. Apply changes.

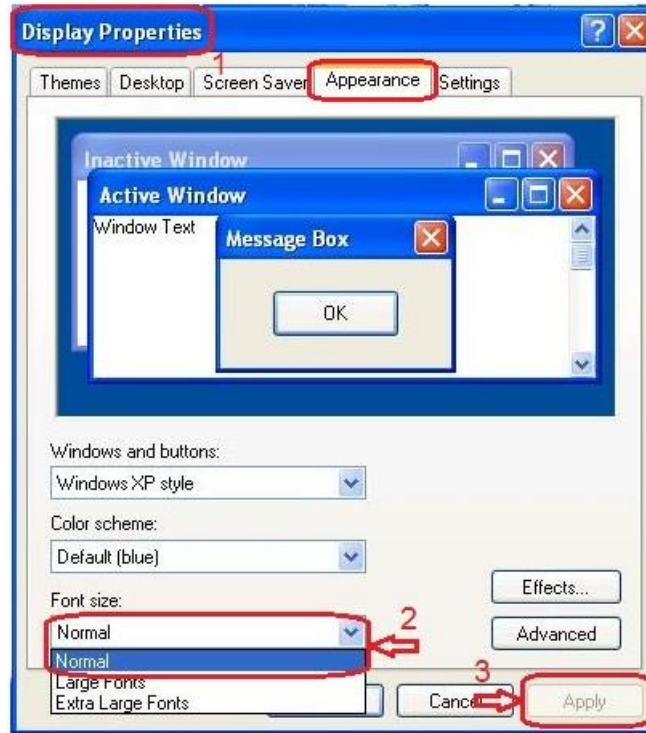


Figure 3: Display Properties in Control Panel

Windows 7

Go to *Control Panel* and select *View by: Large icons*, then click on *Display*. Change the text size to *Smaller – 100%*. Apply changes.

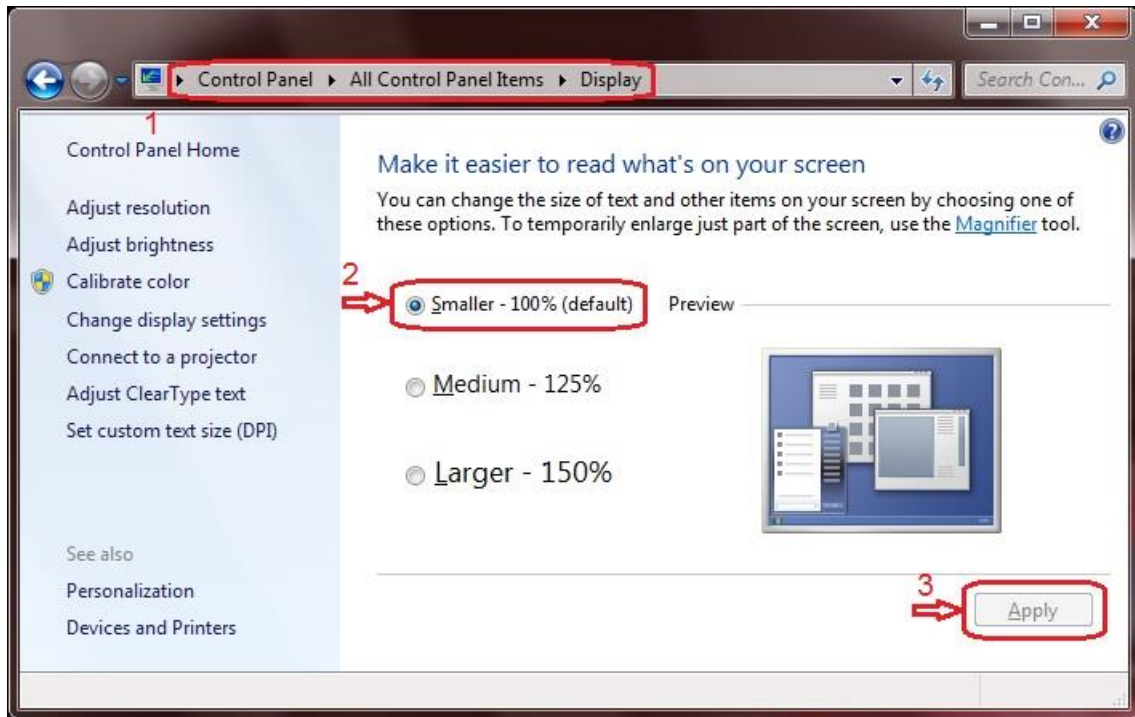


Figure 4: Display in Control Panel