

Affected models: 8960-1x - Prime Mover / Dynamometer

Brief description of the problem:

Speed output signal inaccuracy at low speeds.

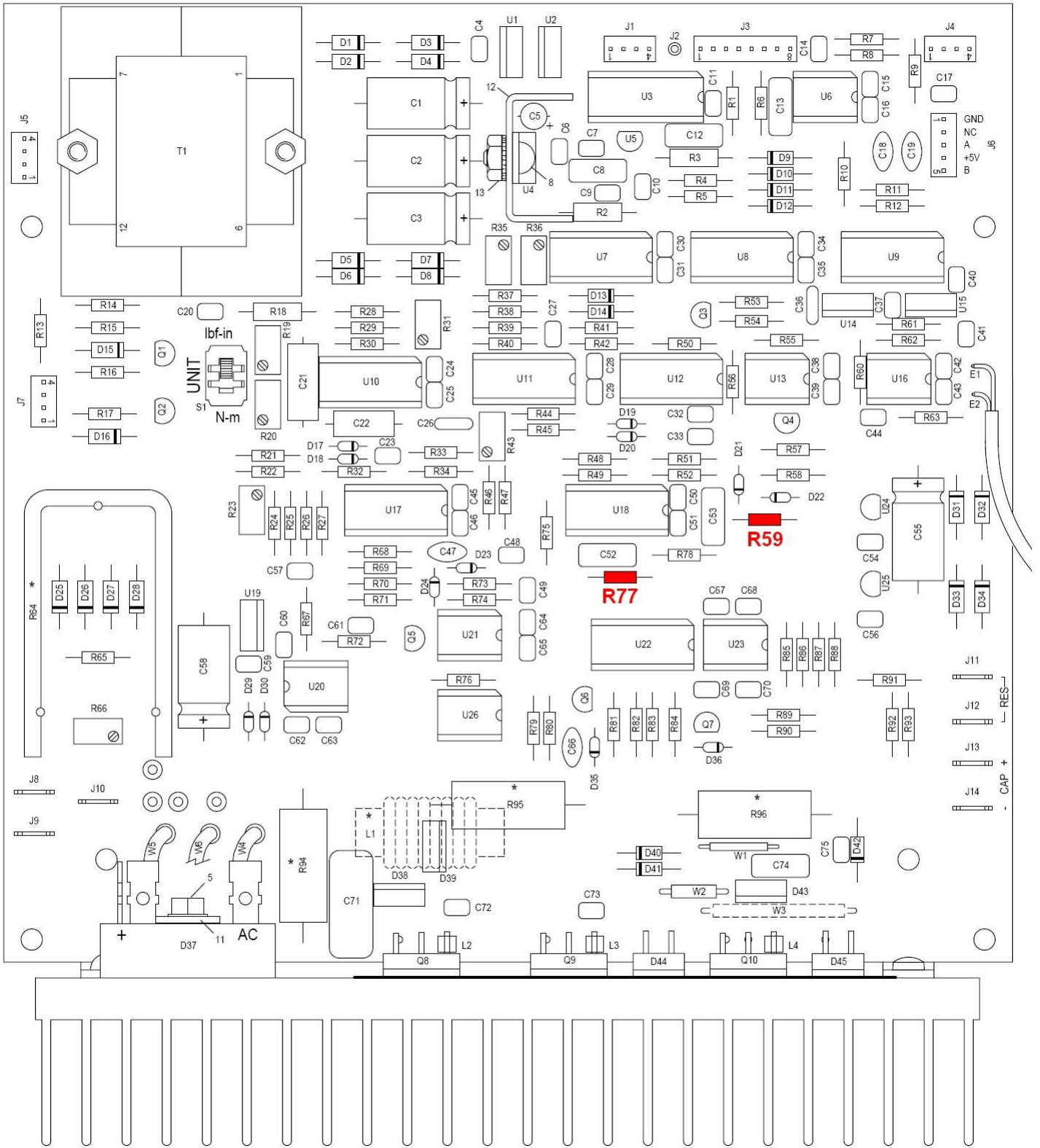
Full description of the problem:

When the 8960-1x is running counterclockwise at speeds between 0 and 600 rpm, the speed output signal does not vary accordingly to the nominal rate of 500 rpm / V.

How to fix:

To fix this problem, two resistors (R59 and R77) have to be replaced on the printed circuit board (30350 rev. 2) which is located beneath the motor. To know the new value of these resistors and where they are located on the printed circuit board, consult the table and figure below.

Identification	current resistor value	New resistor value
R59	1.0M Ω 1/4W 5%	22.0M Ω 1/4W 5%
R77	10.0k Ω 1/4W 5%	2.4k Ω 1/4W 5%



Note:

This product fix is valid only for 8960-1x units that have the revision #2 of printed circuit board 30350. Before you undertake this modification, look at the upper left corner of the printed circuit board (beside Transformer T1) to make sure that your 8960 1x has the a revision. In the event that your 8960-1x has an older revision of printed circuit board 30350, contact us by Email at: services@labvolt.com.